

116-2010-90

PCB Piezotronics Inc. claims proprietary rights in the information disclosed herein. Neither it nor any reproduction thereof will be disclosed to others without written consent of PCB Piezotronics Inc.

APPLICATION		
NEXT ASS'Y	USED ON	VAR

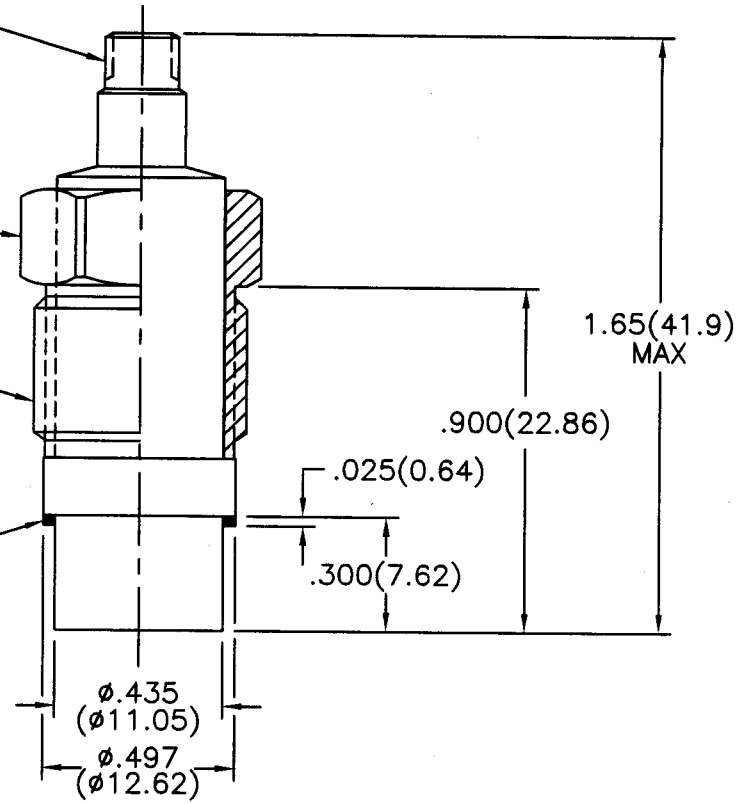
REVISIONS				
REV	DESCRIPTION	ECN	DATE	APP'D
C	METRIC TOLERANCE CORRECTION	16610	12/13/02	bnll/a

ELECTRICAL CONNECTOR
CO-AXIAL 10-32 UNF-2A

MODEL 060A12
CLAMP NUT 9/16 HEX
ST STL (SUPPLIED) $\triangle 3$

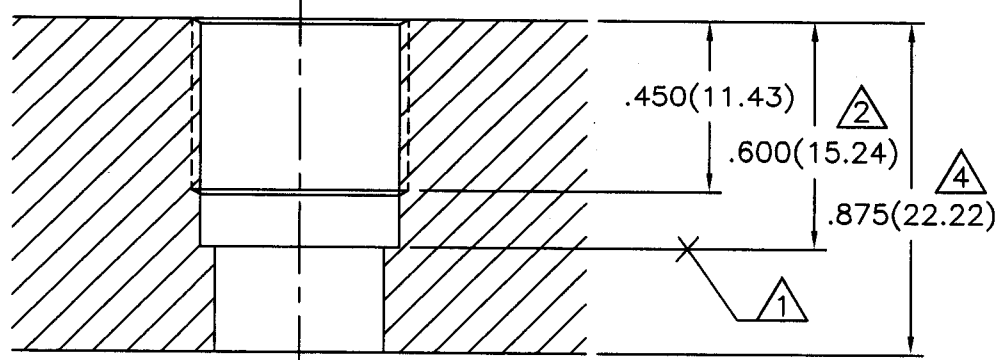
9/16-18 UNF-2A

MODEL 065A37
SEAL .025(0.64) THICK
BRASS (SUPPLIED)



MOUNTING HOLE PREPARATION:

DRILL $\phi .437(\phi 11.10)$
THRU
 $\sqsupset \phi .515(\phi 13.08)$
X $.600(15.24) \nabla$
TAP 9/16-18 UNF-2B
X $.450(11.43) \nabla$



- $\triangle 4$ DIMENSIONS SHOWN ARE FOR .875(22.22) THICK WALL, \sqsupset FOR THICKER WALLS.
- $\triangle 3$ RECOMMENDED MOUNTING TORQUE ON 9/16 HEX
5.0 - 6.0 FOOT POUNDS(7 - 8 NEWTON METERS).
- $\triangle 2$ DRILL PERPENDICULAR TO MOUNTING SURFACE TO WITHIN $\pm 1^\circ$
- $\triangle 1$ SEAL SURFACE MUST BE FLAT AND FREE OF TOOL
MARKS WITH A MINIMUM FINISH OF $63\sqrt{(1.6\sqrt{)}}$.

UNLESS SPECIFIED TOLERANCES		DRAWN JDM 12/13/02 MFG OAS 12/19/02				 3425 WALDEN AVE. DEPEW, NY 14043 (716) 684-0001 EMAIL: SALES@PCB.COM	
DIMENSIONS IN INCHES	DIMENSIONS IN MILLIMETERS (IN PARENTHESIS)	CHK'D Dm 12/17/02	ENGR WSH 12/16/02	APP'D RV 12/19/02	SALES Jmm 12/19/02		
DECIMALS XX $\pm .01$ XXX $\pm .005$	DECIMALS X ± 0.3 XX ± 0.13	TITLE INSTALLATION DRAWING MODEL 116B01 PRESSURE TRANSDUCER				DWG. NO. 116-2010-90	SCALE: 2X SHEET 1 OF 1
ANGLES ± 2 DEGREES	ANGLES ± 2 DEGREES	FILLETS AND RADII .003 - .005				FILLETS AND RADII (0.07 - 0.13)	
DD011 REV. B 03/13/98							