

2

1

APPLICATION

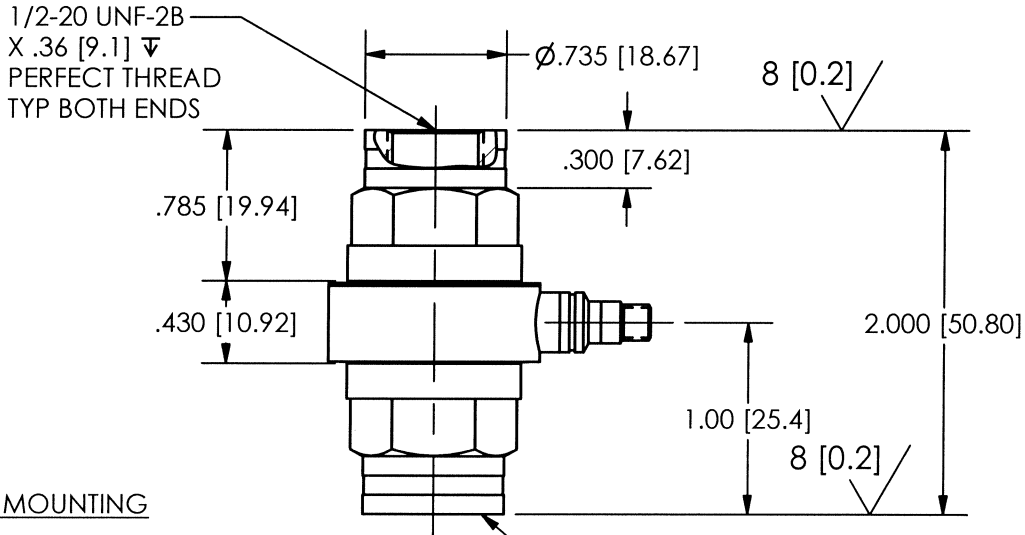
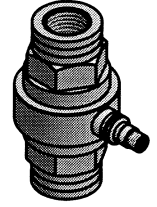
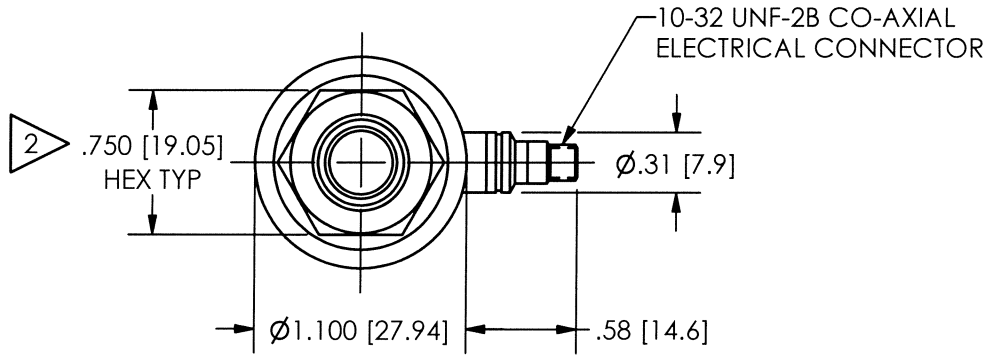
REVISIONS

NEXT ASSY	USED ON	VAR

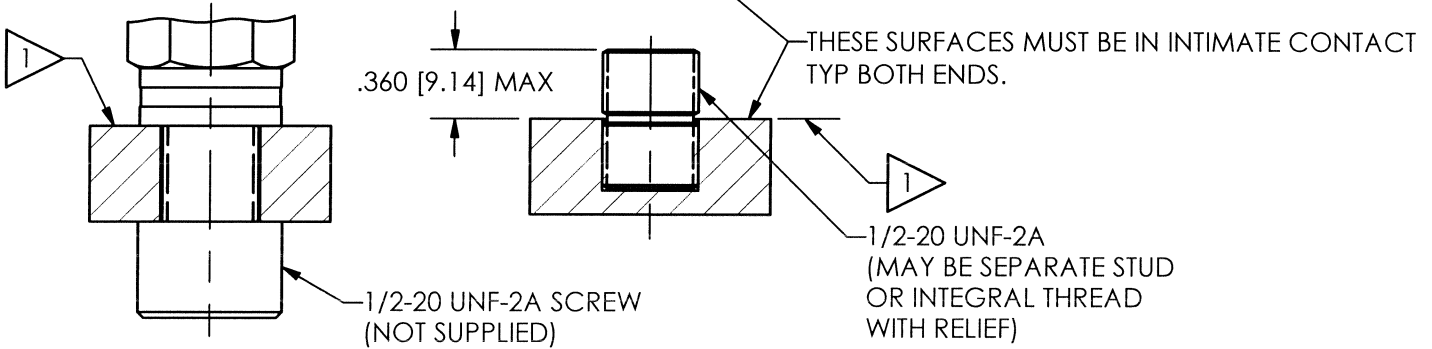
REV	DESCRIPTION	ECN	APP'D
NR	RELEASED TO DRAFTING		DM 8/94
A	UPDATE DRAWING	24825	ECB 8/16/06

1580

PCB Piezotronics Inc. claims proprietary rights in the information disclosed hereon. Neither it nor any reproduction thereof will be disclosed to others without the written consent of PCB Piezotronics Inc.



ALTERNATE MOUNTING



3.) EPOXY OR LOCTITE MAY BE USED ON THREADS TO LOCK FORCE LINK IN PLACE.

2 RECOMMENDED MOUNTING TORQUE ON .750 [19.05] HEX, 5-10 FOOT POUNDS [7-14 NEWTON METERS].

1 MOUNTING SURFACE MUST BE FLAT TO WITHIN .001 [0.03] TIR WITH A MIN 63 [1.6] FINISH.

UNLESS OTHERWISE SPECIFIED TOLERANCES ARE:

DIMENSIONS IN INCHES	DIMENSIONS IN MILLIMETERS [IN BRACKETS]
DECIMALS XX ± .01 XXX ± .005	DECIMALS X ± 0.3 XX ± 0.13
ANGLES ± 2 DEGREES	ANGLES ± 2 DEGREES

FILLETS AND RADII .003 - .005

FILLETS AND RADII [0.07 - 0.13]

DRAWN	<i>mof</i> 8/16/06	MFG	<i>P.R.A</i> 8-17-06
CHK'D	<i>ECB</i> 8/16/06	ENGR	<i>J.M.S</i> 8/17/06
APP'D	<i>mjk</i> 8/23/06	SALES	



3425 WALDEN AVE. DEPEW, NY 14043
(716) 684-0001 E-MAIL: sales@pcb.com

TITLE
INSTALLATION DRAWING
MODEL (P)233B
HERMETIC SEALED FORCE LINK

CODE IDENT. NO. 52681	DWG. NO. 1580
SCALE: FULL	SHEET 1 OF 1

2

1