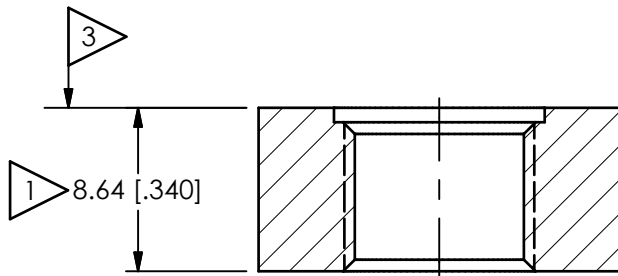
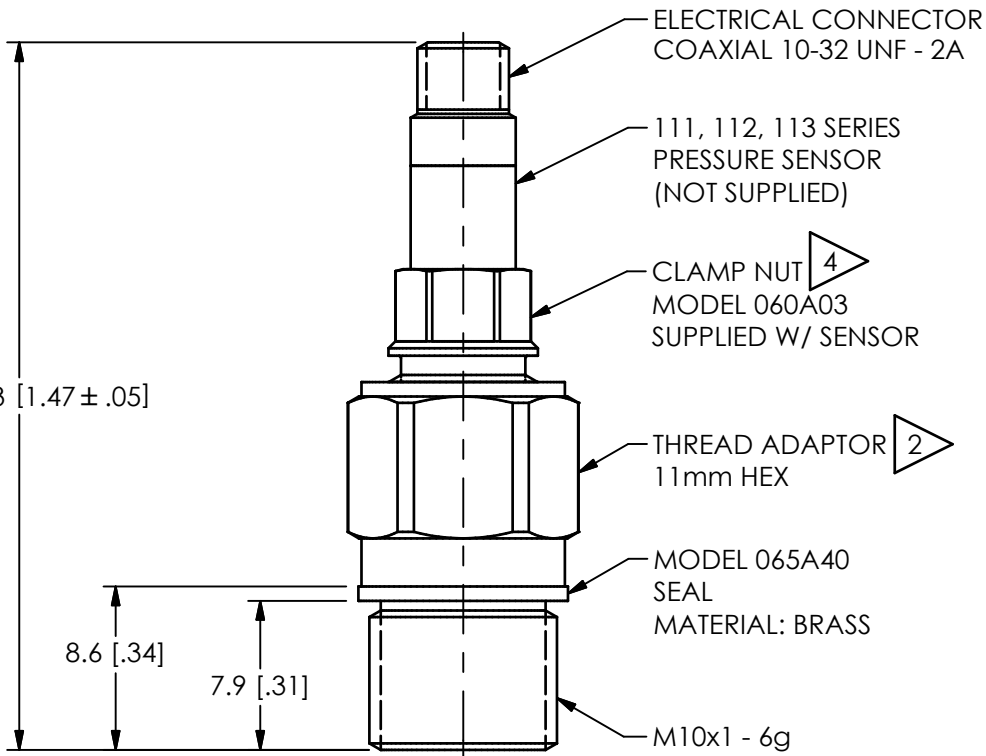


PCB Piezotronics Inc. claims proprietary rights in the information disclosed herein. Neither it nor any reproduction thereof will be disclosed to others without the written consent of PCB Piezotronics Inc.

REVISIONS

REV	DESCRIPTION	DIN
C	UPDATED DIMENSION TOLERANCES	54498

18785



MOUNTING HOLE PREPARATION:  
M10x1 - 6H THRU  
 $\perp \varnothing 11.13 \pm .03 [\perp \varnothing .437 \pm .001] \nabla .76 [.030]$

- 4 MOUNTING TORQUE ON 1/4 HEX, 25-35 IN-LBS [2.82-3.95 Nm]
- 3 SEAL SURFACE MUST BE FLAT AND FREE OF TOOL MARKS WITH A MINIMUM FINISH OF 63
- 2 MOUNTING TORQUE ON 11mm HEX: 6.78-10.85 Nm [5 TO 8 FT LBS]
- 1 ABOVE INSTALLATION SHOWN FOR WALL THICKNESS OF 8.64 [.340]. COUNTERBORE THICKER WALLS  $\varnothing 19.05 [.750]$  TO CLEAR 11mm HEX AND ALLOW FOR SOCKET WRENCH

UNLESS OTHERWISE SPECIFIED TOLERANCES ARE:		DRAWN		CHECKED		ENGINEER				
DIMENSIONS IN INCHES DECIMALS XX ± .01 XXX ± .005 ANGLES ± 2 DEGREES	DIMENSIONS IN MILLIMETERS [IN BRACKETS] DECIMALS X ± 0.3 XX ± 0.13 ANGLES ± 2 DEGREES	NJF	01/10/24	JDM	01/10/24	RF	01/10/24			3425 WALDEN AVE. DEPEW, NY 14043 (716) 684-0001 E-MAIL: sales@pcb.com
CABLE TOLERANCES IN ENGLISH 1" ≤ LENGTH < 1' = +1"/ - 0 1' ≤ LENGTH < 5' = +2"/ - 0 5' ≤ LENGTH < 100' = +6"/ - 0 100' ≤ LENGTH = +1'/ - 0	CABLE TOLERANCES IN METRIC 2.54cm ≤ LENGTH < 30.5cm = +2.54cm/ - 0 30.5cm ≤ LENGTH < 1.5m = +5.1cm/ - 0 1.5m ≤ LENGTH < 30.5m = +15.2cm/ - 0 30.5m ≤ LENGTH = +30.5cm/ - 0	TITLE INSTALLATION DRAWING MODEL 061A10/061A11 THREAD ADAPTOR						CODE IDENT. NO. 52681	SHEET A	DWG. NO. 18785
FILLETS AND RADII .003 - .005	FILLETS AND RADII 0.07 - 0.13							SCALE: 2.5X		SHEET 1 OF 1