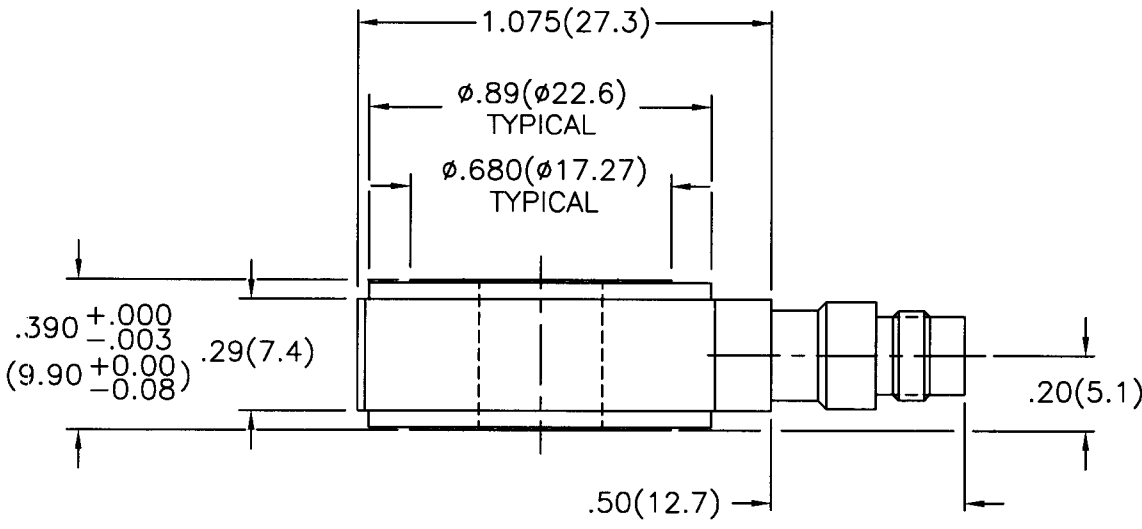
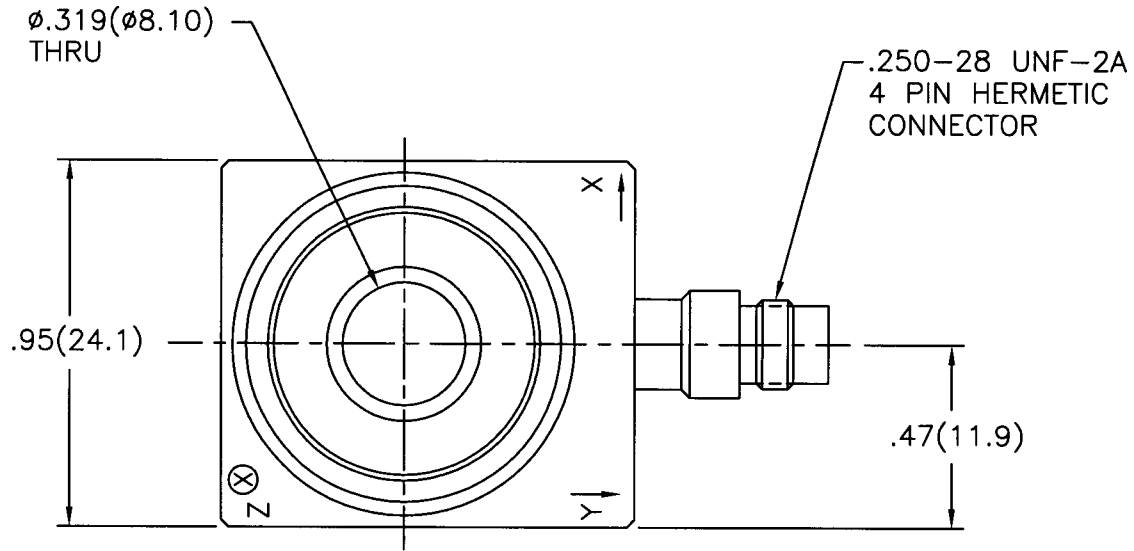


24186

PCB Piezotronics Inc. claims proprietary rights in the information disclosed hereon. Neither it nor any reproduction thereof will be disclosed to others without written consent of PCB Piezotronics Inc.

APPLICATION		
NEXT ASS'Y	USED ON	VAR

REVISIONS				
REV	DESCRIPTION	ECN	DATE	APP'D
NR	RELEASED TO DRAFTING		10/15/03	dm 10/07



1.) SEE SHEETS 2 AND 3 FOR STANDARD AND METRIC MOUNTING INSTRUCTIONS.

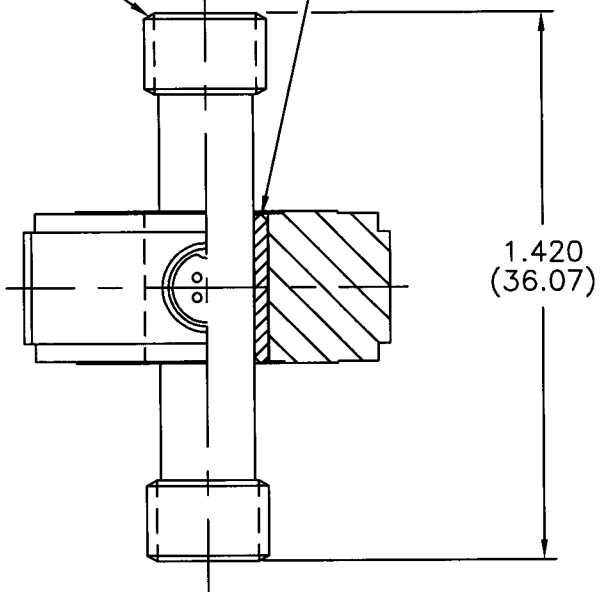
UNLESS SPECIFIED TOLERANCES		DRAWN	AJS	10/15/03	MFG	PJL	10/23/03	 3425 WALDEN AVE. DEPEW, NY 14043 (716) 684-0001 EMAIL: SALES@PCB.COM
DIMENSIONS IN INCHES	DIMENSIONS IN MILLIMETERS (IN PARENTHESIS)	CHK'D	DM	10/16/05	ENGR	DOB	10/21/07	
DECIMALS XX ±0.1 XXX ±0.05	DECIMALS XX ±0.3 XXX ±0.13	APP'D	DMB	10/27/03	Sales	JM	10/21/03	
ANGLES ±2 DEGREES	ANGLES ±2 DEGREES	TITLE	INSTALLATION DRAWING MODEL (M)260M21 ICP TRIAxIAL FORCE SENSOR				CODE IDENT. NO. 52681	
FILLETS AND RADII .003 - .005	FILLETS AND RADII (0.07 - 0.13)	DD011 REV. B 03/13/98		SCALE: 2X		SHEET 1 OF 3		

APPLICATION			REVISIONS				
NEXT ASS'Y	USED ON	VAR	REV	DESCRIPTION	ECN	DATE	APP'D
				-SEE SHEET ONE-			

24186
 PCB Piezotronics Inc. claims proprietary rights in the information disclosed herein. Neither it nor any reproduction thereof will be disclosed to others without written consent of PCB Piezotronics Inc.

MODEL 081A70
 STUD
 5/16-24 UNF-2A
 TYP EACH END
 (SUPPLIED)

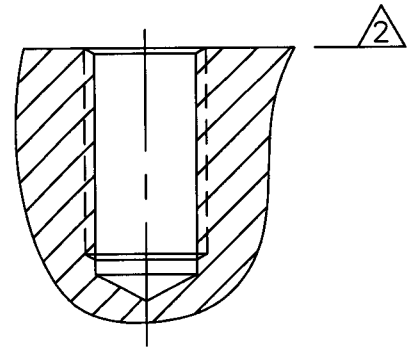
MODEL 083A10
 PILOT BUSHING
 (SUPPLIED)



TYP STUD MOUNTING
INSTALLATION

MOUNTING HOLE PREPARATION:

DRILL $\phi .272(\phi 6.91)$ $\triangle 3$
 X .655(16.64) ∇
 TAP 5/16-24 UNF-2B
 X .555(14.10) ∇
 PERFECT THREAD



- 4.) SEE MANUAL FOR PRELOAD INSTRUCTIONS.
- $\triangle 3$ DRILL PERPENDICULAR TO MOUNTING SURFACE TO WITHIN $\pm 1^\circ$.
- $\triangle 2$ MOUNTING SURFACE UNDER FORCE RING MUST BE FLAT WITHIN .001(0.03) TIR WITH A $32/ (0.8/)$ FINISH.

UNLESS SPECIFIED TOLERANCES		DRAWN	ASJ	10/15/03	MFG	Pa	10/26/03	 3425 WALDEN AVE. DEPEW, NY 14043 (716) 684-0001 EMAIL: SALES@PCB.COM
DIMENSIONS IN INCHES	DIMENSIONS IN MILLIMETERS (IN PARENTHESIS)	CHK'D	Dm	10/16/03	ENGR	L.S	1/22/03	
DECIMALS XX $\pm .01$	DECIMALS XX ± 0.3	APP'D	Dmg	10/27/03	Jales	ggm	11/21/03	CODE IDENT. NO. 52681
XXX $\pm .005$	XXX ± 0.13	TITLE						DWG. NO. 24186
ANGLES ± 2 DEGREES	ANGLES ± 2 DEGREES	INSTALLATION DRAWING						SCALE: 2X
FILLETS AND RADII .003 - .005	FILLETS AND RADII (0.07 - 0.13)	MODEL 260M21 ICP TRIAXIAL FORCE SENSOR						
DD007 REV. B 03/13/98								

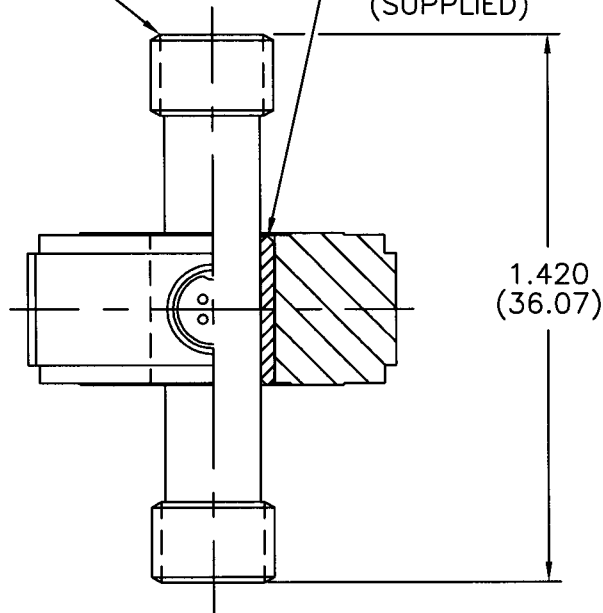
APPLICATION			REVISIONS				
NEXT ASS'Y	USED ON	VAR	REV	DESCRIPTION	ECN	DATE	APP'D
				-SEE SHEET ONE-			

24186

PCB Piezotronics Inc. claims proprietary rights in the information disclosed hereon. Neither it nor any reproduction thereof will be disclosed to others without written consent of PCB Piezotronics Inc.

MODEL M081A70
STUD
M8 X 1.25-6g
TYP EACH END
(SUPPLIED)

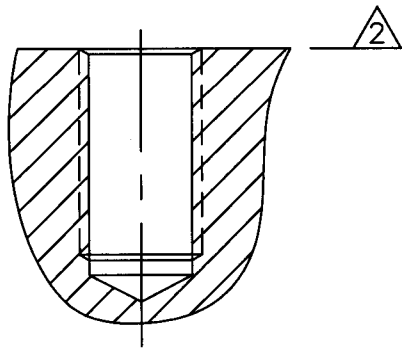
MODEL 083A10
PILOT BUSHING
(SUPPLIED)



TYP STUD MOUNTING
INSTALLATION

MOUNTING HOLE PREPARATION:

DRILL $\phi .266(\phi 6.80)$ $\triangle 3$
X .655(16.64) ∇
TAP M8 X 1.25-6H
X .555(14.10) ∇
PERFECT THREAD



- 4.) SEE MANUAL FOR PRELOAD INSTRUCTIONS.
- $\triangle 3$ DRILL PERPENDICULAR TO MOUNTING SURFACE TO WITHIN $\pm 1^\circ$.
- $\triangle 2$ MOUNTING SURFACE UNDER FORCE RING MUST BE FLAT WITHIN .001(0.03) TIR WITH A $32/ (0.8/)$ FINISH.

UNLESS SPECIFIED TOLERANCES		DRAWN	ASS	10/15/03	MFG	PZ	10/20/03	 3425 WALDEN AVE. DEPEW, NY 14043 (716) 684-0001 EMAIL: SALES@PCB.COM
DIMENSIONS IN INCHES	DIMENSIONS IN MILLIMETERS (IN PARENTHESIS)	CHK'D	DM	10/16/03	ENGR	KAB	10/22/03	
DECIMALS XX $\pm .01$ XXX $\pm .005$	DECIMALS XX ± 0.3 XXX ± 0.13	APP'D	DMP	10/27/03	SATS	BHR	10/30/03	
ANGLES ± 2 DEGREES	ANGLES ± 2 DEGREES	TITLE		INSTALLATION DRAWING MODEL M260M21 ICP TRIAxIAL FORCE SENSOR		CODE IDENT. NO. 52681	DWG. NO. 24186	
FILLETS AND RADII .003 - .005	FILLETS AND RADII (0.07 - 0.13)	DD007 REV. B 03/13/98		SCALE: 2X		SHEET 3 OF 3		