

2

1

PCB Piezotronics Inc. claims proprietary rights in the information disclosed herein. Neither it nor any reproduction thereof will be disclosed to others without the written consent of PCB Piezotronics Inc.

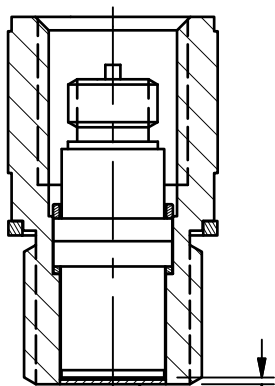
REVISIONS

REV	DESCRIPTION	DIN
F	REPLACED 060A16 WITH 060A03	53580

6450

ELECTRICAL CONNECTOR
10-32 UNF - 2A

ABLATIVE INSTALLATION



B

B

MODEL 061A SERIES
ADAPTOR BODY
MATERIAL: 17-4 PH

MODEL 060A03
CLAMP NUT

1.47 ± .05 [37.4 ± 1.3]

2 .437 [11.10] HEX

5 MODEL 065A03
BRASS SEAL
MODEL 065A44
COPPER SEAL

.34 [8.6]

3/8-24 UNF - 2A

.31 [7.9]

.020 [.51]
.015 [.38]

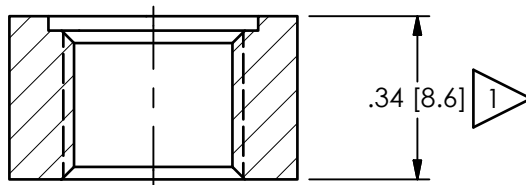
ABLATIVE COATING



MOUNTING HOLE PREPARATION:

3/8-24 UNF - 2B THRU

⊥ ∅.437 ± .001 [11.13 ± .03] ∇.030 [.76]



.34 [8.6]



5 REFER TO SPEC SHEET. MODEL 065M29 ST STL SEAL AVAILABLE

4 BLACK VINYL ELECTRICIANS TAPE HAS BEEN FOUND TO BE AN EFFECTIVE ABLATIVE MATERIAL, AS IS DC-4 SILICON GREASE

3 "CA" OPTION ONLY

2 MOUNTING TORQUE ON .437 [11.10] HEX: 5-8 FT-LBS [6.78-10.85 Nm]

1 ABOVE INSTALLATION SHOWN FOR WALL THICKNESS OF .34 [8.6]. ⊥ THICKER

WALLS ∅.75 [19.1] TO CLEAR .437 [11.10] HEX AND ALLOW FOR SOCKET WRENCH

A

A

UNLESS OTHERWISE SPECIFIED TOLERANCES ARE:

DRAWN		CHECKED		ENGINEER	
NJF	02/16/23	JDM	02/16/23	MJB	02/16/23

PCB PIEZOTRONICS
AN AMPHENOL COMPANY

3425 WALDEN AVE. DEPEW, NY 14043
(716) 684-0001 E-MAIL: sales@pcb.com

DIMENSIONS IN INCHES	
DECIMALS XX ± .01 XXX ± .005	
ANGLES ± 2 DEGREES	

DIMENSIONS IN MILLIMETERS [IN BRACKETS]	
DECIMALS X ± 0.3 XX ± 0.13	
ANGLES ± 2 DEGREES	

CABLE TOLERANCES IN ENGLISH	
1" ≤ LENGTH < 1'	= +1"/ - 0
1' ≤ LENGTH < 5'	= +2"/ - 0
5' ≤ LENGTH < 100'	= +6"/ - 0
100' ≤ LENGTH	= +1"/ - 0

CABLE TOLERANCES IN METRIC	
2.54cm ≤ LENGTH < 30.5cm	= +2.54cm/ - 0
30.5cm ≤ LENGTH < 1.5m	= +5.1cm/ - 0
1.5m ≤ LENGTH < 30.5m	= +15.2cm/ - 0
30.5m ≤ LENGTH	= +30.5cm/ - 0

FILLETS AND RADII	
.003 - .005	

FILLETS AND RADII	
0.07 - 0.13	

TITLE
INSTALLATION DRAWING
MODELS 101A & 102A & 102B,
102M PRESSURE SENSOR

CODE IDENT. NO.	DWG. NO.
52681	6450

SCALE: 2.5X	SHEET 1 OF 1
-------------	--------------

2

1