

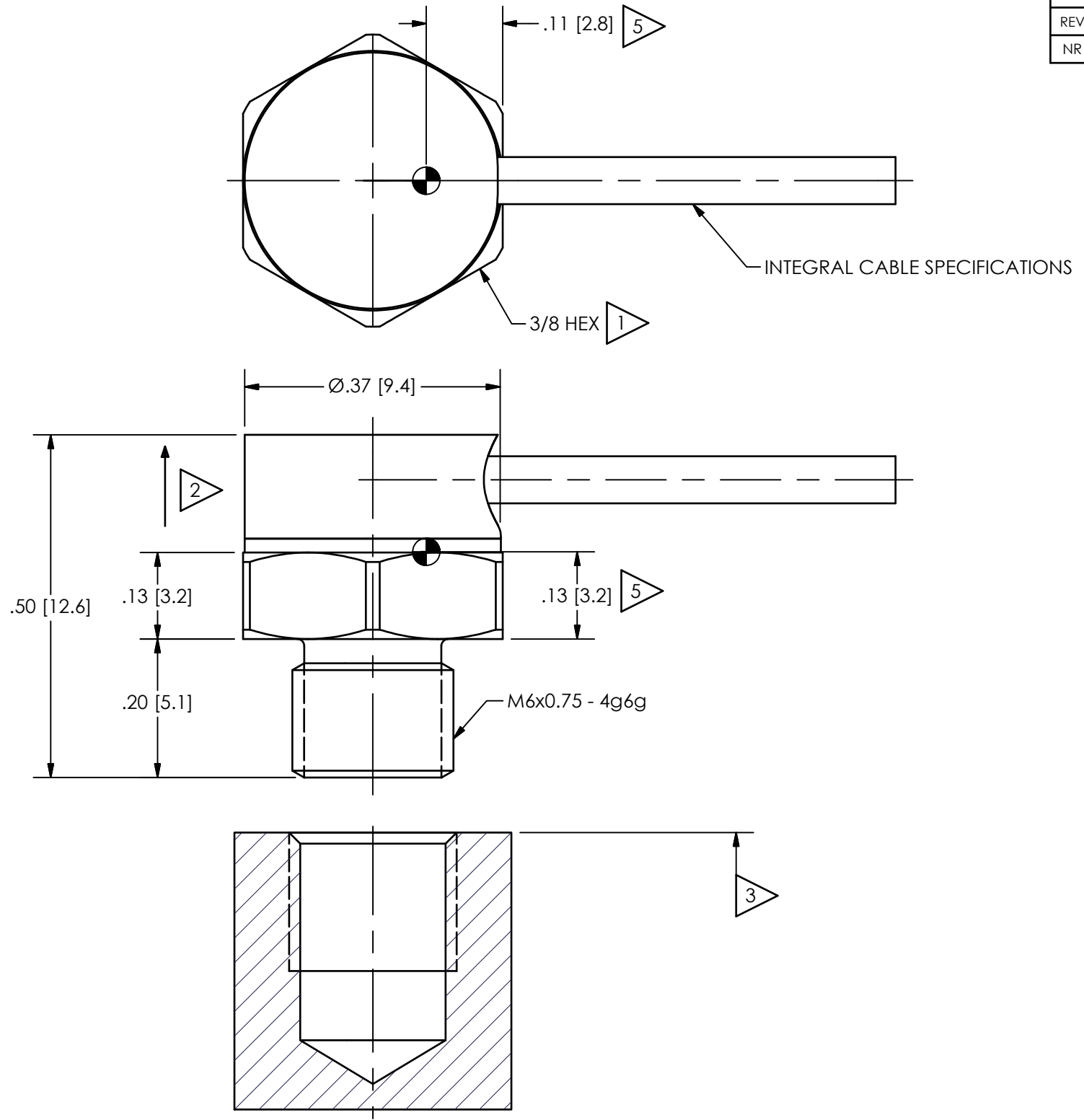
65016

PCB Piezotronics Inc. claims proprietary rights in the information disclosed hereon. Neither it nor any reproduction thereof will be disclosed to others without the written consent of PCB Piezotronics Inc.




ESD SENSITIVE
CLASS 2 HANDLING REQUIRED

4 MOUNTING HOLE PREPARATION:
Ø.21 [5.9] ∇ .30 [7.6]
M6 X 0.75-6H ∇ .20 [5.1]



ELECTRICAL CONNECTIONS
GREEN : + SIGNAL
WHITE : - SIGNAL
RED: + EXCITATION
BLACK: - EXCITATION

- 5 CENTER OF SEISMIC MASS
- 4 DRILL PERPENDICULAR TO MOUNTING SURFACE TO WITHIN $\pm 1^\circ$
- 3 RECOMMENDED MOUNTING SURFACE SHOULD BE FLAT TO WITHIN .0003(.008) TIR OVER Ø.650 [16.51] WITH A SURFACE FINISH OF 32 [.08] FINISH FOR BEST RESULTS
- 2 DIRECTION OF POSITIVE OUTPUT
- 1 RECOMMENDED MOUNTING TORQUE ON 3/8 HEX, 1-2 FOOT POUND [1.4-2.7 NEWTON METERS]

UNLESS OTHERWISE SPECIFIED TOLERANCES ARE:		DRAWN		CHECKED		ENGINEER		 3425 WALDEN AVE. DEPEW, NY 14043 (716) 684-0001 E-MAIL: sales@pcb.com					
DIMENSIONS IN INCHES		KRM		9/20/16		JDG				9/20/16		GCD	
DECIMALS XX \pm .01 XXX \pm .005		DECIMALS X \pm .03 XX \pm .013		TITLE INSTALLATION DRAWING MODEL M3501B12XXKG SERIES ACCELEROMETER									
ANGLES \pm 2 DEGREES		ANGLES \pm 2 DEGREES											
FILLETS AND RADII .003 - .005		FILLETS AND RADII 0.07 - 0.13		CODE IDENT. NO. 52681									
				DWG. NO. 65016									
				SCALE: 5X									
				SHEET 1 OF 1									