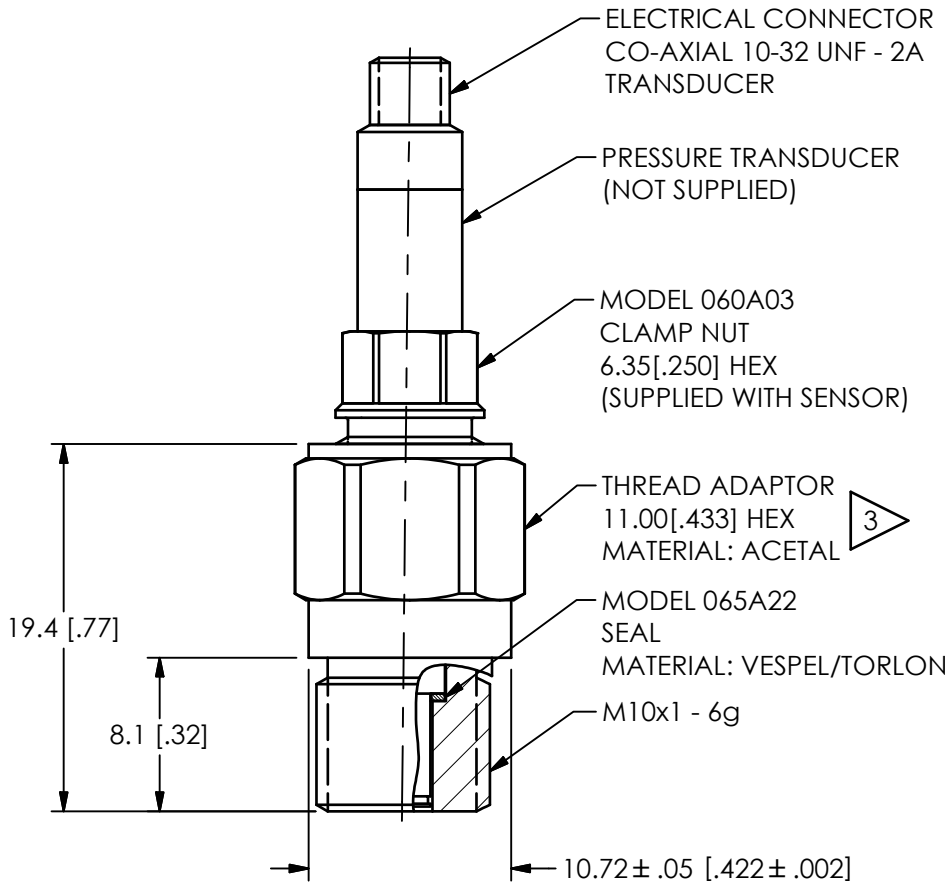


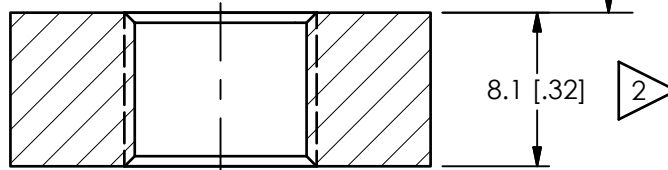
PCB Piezotronics Inc. claims proprietary rights in the information disclosed hereon. Neither it nor any reproduction thereof will be disclosed to others without the written consent of PCB Piezotronics Inc.

REVISIONS		
REV	DESCRIPTION	DIN
NR	RELEASED TO DRAFTING	47846

68824



MOUNTING HOLE PREPERATION  
Ø9.10[.355]THRU  
M10 X 1.0-6H THRU



- 3 RECOMMENDED MOUNTING TORQUE ON THREAD ADAPTOR, 0.9-1.4 Nm[8-12 IN-LBS]
- 2 COUNTERBORE THICKER WALLS TO THIS DIMENSION
- 1 SEAL SURFACE MUST BE FLAT AND FREE OF TOOLS MARKS WITH A MINIMUM SURFACE FINISH OF 1.6[63]

UNLESS OTHERWISE SPECIFIED TOLERANCES ARE:		DRAWN		CHECKED		ENGINEER		 3425 WALDEN AVE. DEPEW, NY 14043 (716) 684-0001 E-MAIL: sales@pcb.com	
DIMENSIONS IN INCHES	DIMENSIONS IN MILLIMETERS [IN BRACKETS]	KRM	2/20/18	KRM	2/20/18	DRK	2/20/18		
DECIMALS XX ±.01 XXX ±.005	DECIMALS X ± 0.3 XX ± 0.13	TITLE INSTALLATION DRAWING MODEL M061A59 THREAD ADAPTOR							CODE IDENT. NO. 52681
ANGLES ± 2 DEGREES	ANGLES ± 2 DEGREES								DWG. NO. 68824
FILLETS AND RADII .003 - .005	FILLETS AND RADII 0.07 - 0.13	SCALE: 2X		SHEET 1 OF 1					