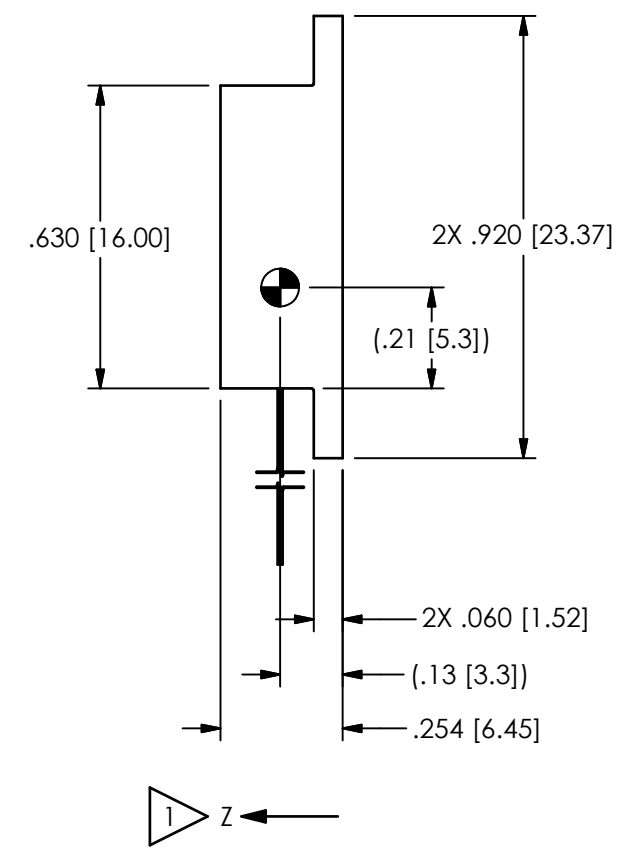
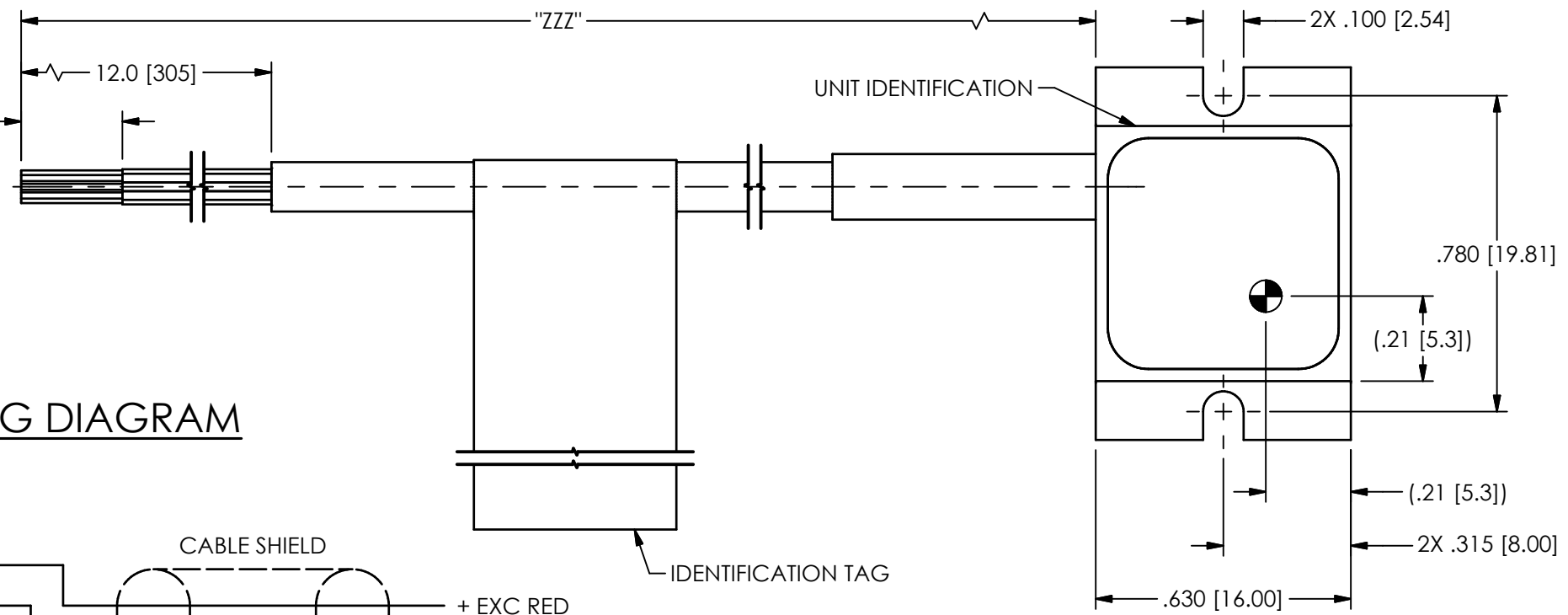
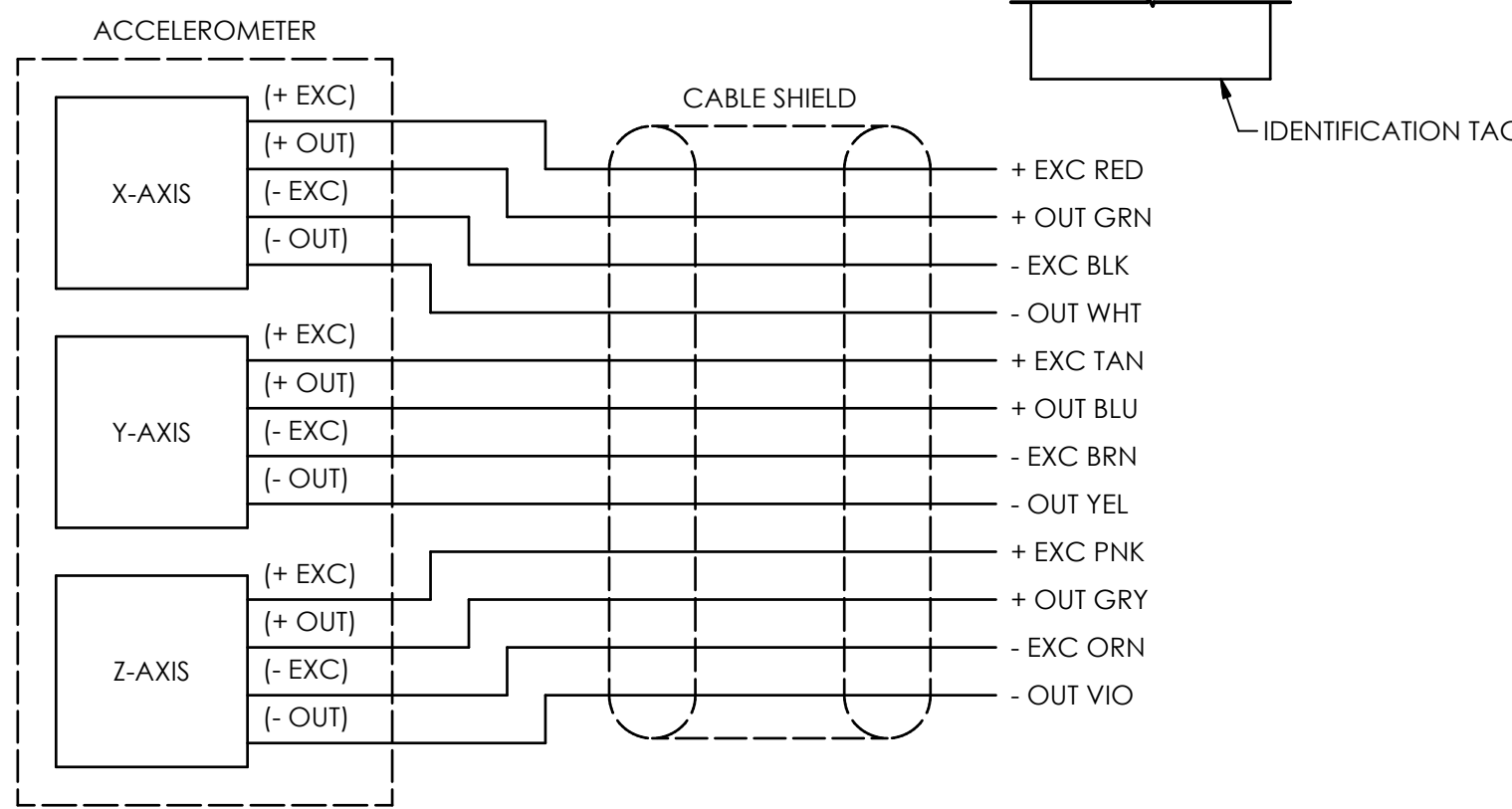


PCB Piezotronics Inc. claims proprietary rights in the information disclosed hereon. Neither it nor any reproduction thereof will be disclosed to others without the written consent of PCB Piezotronics Inc.

78076

REVISIONS		
REV	DESCRIPTION	DIN
NR	RELEASED TO DRAFTING	54035

WIRING DIAGRAM



713AL - XXX - ZZZ
 —CABLE LENGTH ("LENGTH") IS DETERMINED BY "ZZZ" ON THE MODEL NUMBER 713FL-XXX-ZZZ (I.E. 713FL-XXX-120 HAS A LENGTH OF 120 INCHES)
 —RANGE IN G'S
 2K = ± 2,000G
 —BASIC MODEL NUMBER

1 AXIS SENSITIVITY DIRECTION FOR POSITIVE OUTPUT

UNLESS OTHERWISE SPECIFIED TOLERANCES ARE:				DRAWN		CHECKED		ENGINEER	
DIMENSIONS IN INCHES		DIMENSIONS IN MILLIMETERS [IN BRACKETS]		NJF	07/25/23	JDM	07/25/23	JKN	07/25/23
DECIMALS XX ±.03	DECIMALS X ± 0.8	DECIMALS XXX ±.010	DECIMALS XX ± 0.25	TITLE					
ANGLES ± 2 DEGREES	ANGLES ± 2 DEGREES	OUTLINE DRAWING							
CABLE TOLERANCES IN ENGLISH		CABLE TOLERANCES IN METRIC		713FL					
1" ≤ LENGTH < 1'	= +1"/ - 0	2.54cm ≤ LENGTH < 30.5cm	= +2.54cm/ - 0	CODE IDENT. NO. 52681					
1' ≤ LENGTH < 5'	= +2"/ - 0	30.5cm ≤ LENGTH < 1.5m	= +5.1cm/ - 0	DWG. NO. 78076					
5' ≤ LENGTH < 100'	= +6"/ - 0	1.5m ≤ LENGTH < 30.5m	= +15.2cm/ - 0	SCALE: 2.5X SHEET 1 OF 1					
100' ≤ LENGTH	= +1"/ - 0	30.5m ≤ LENGTH	= +30.5cm/ - 0						
FILLETS AND RADII .003 - .005		FILLETS AND RADII 0.07 - 0.13							

PCB PIEZOTRONICS
 AN AMPHENOL COMPANY
 3425 WALDEN AVE. DEPEW, NY 14043
 (716) 684-0001 E-MAIL: sales@pcb.com